

Remarks on curricula development Ljubljana, 17 June 2022



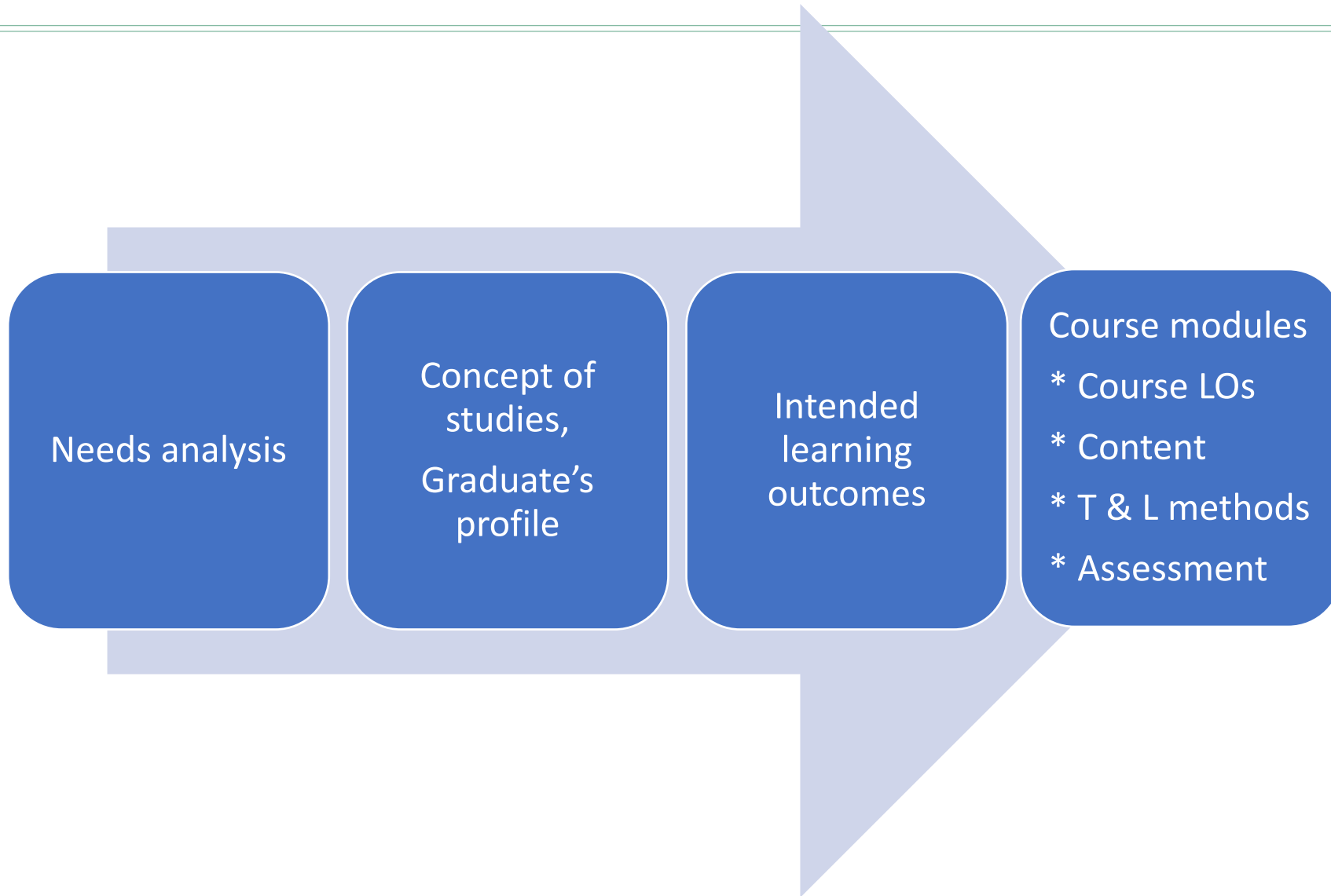
CBHE PROJECT: 617695-EPP-1-2020-1-ES-EPPKA2-CBHE-JP

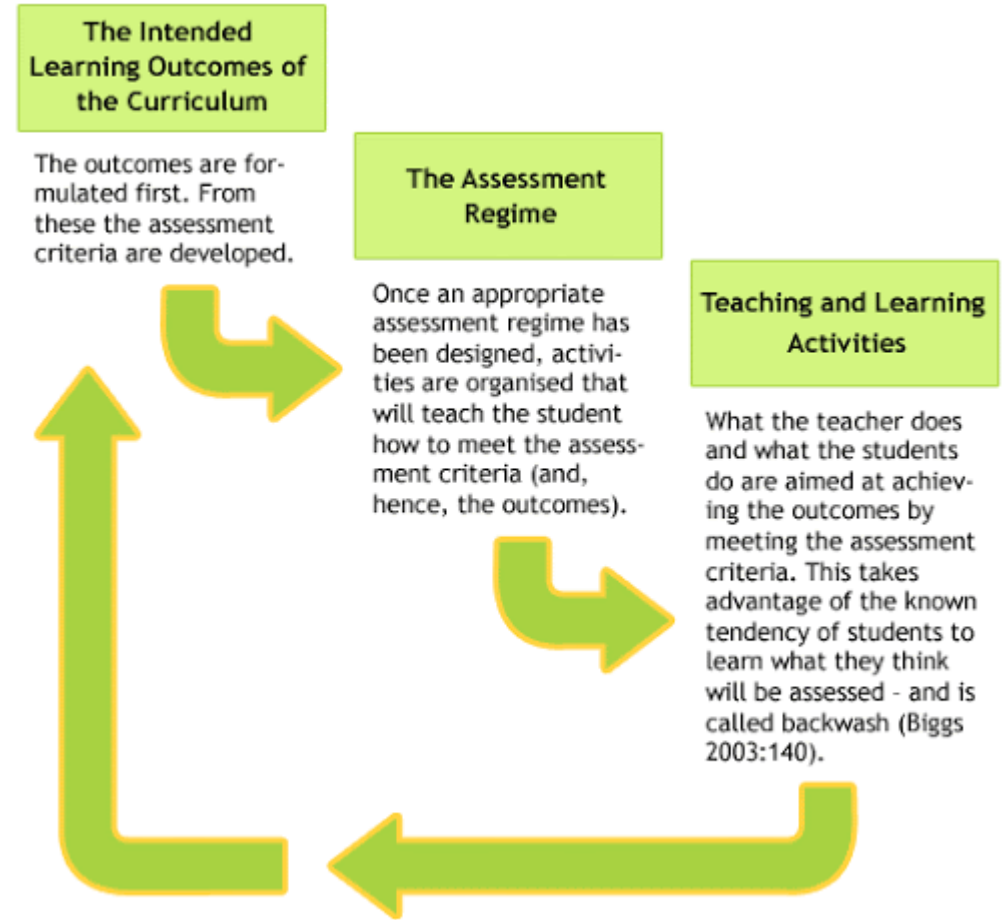
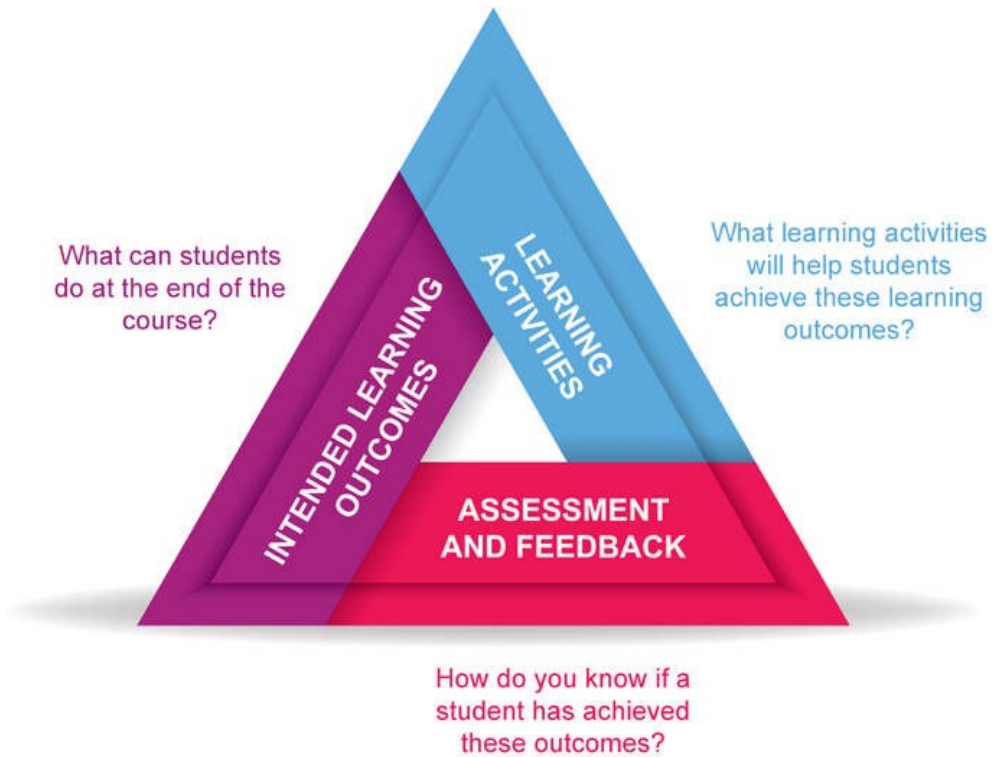
“Developing Interdisciplinary Postgraduate Programmes and Strengthening Research Networks in Geoinformation Technologies in Armenia and Kyrgyzstan”

Marek Frankowicz
Jagiellonian University in Krakow, Poland

Co-funded by the
Erasmus+ Programme
of the European Union

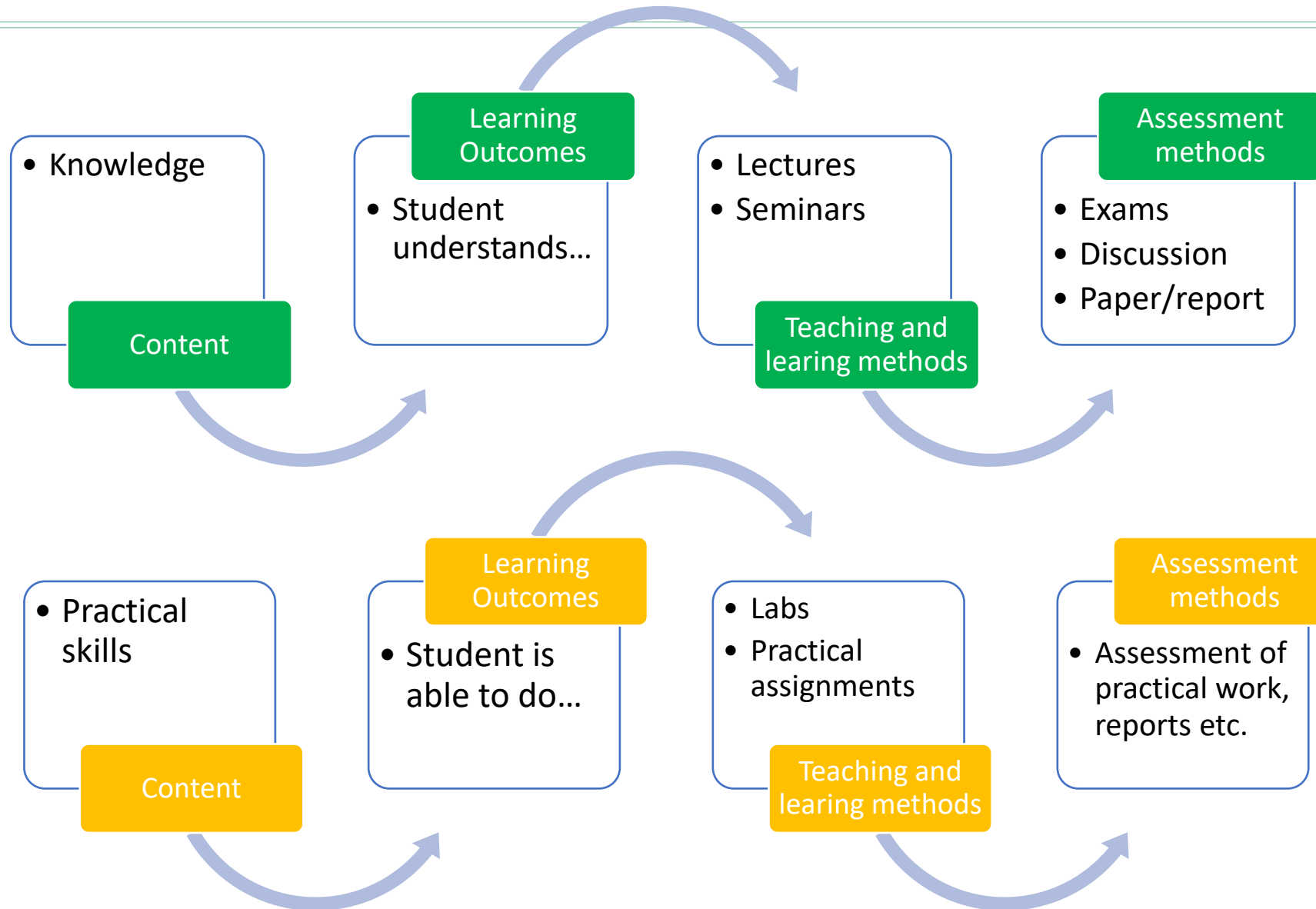


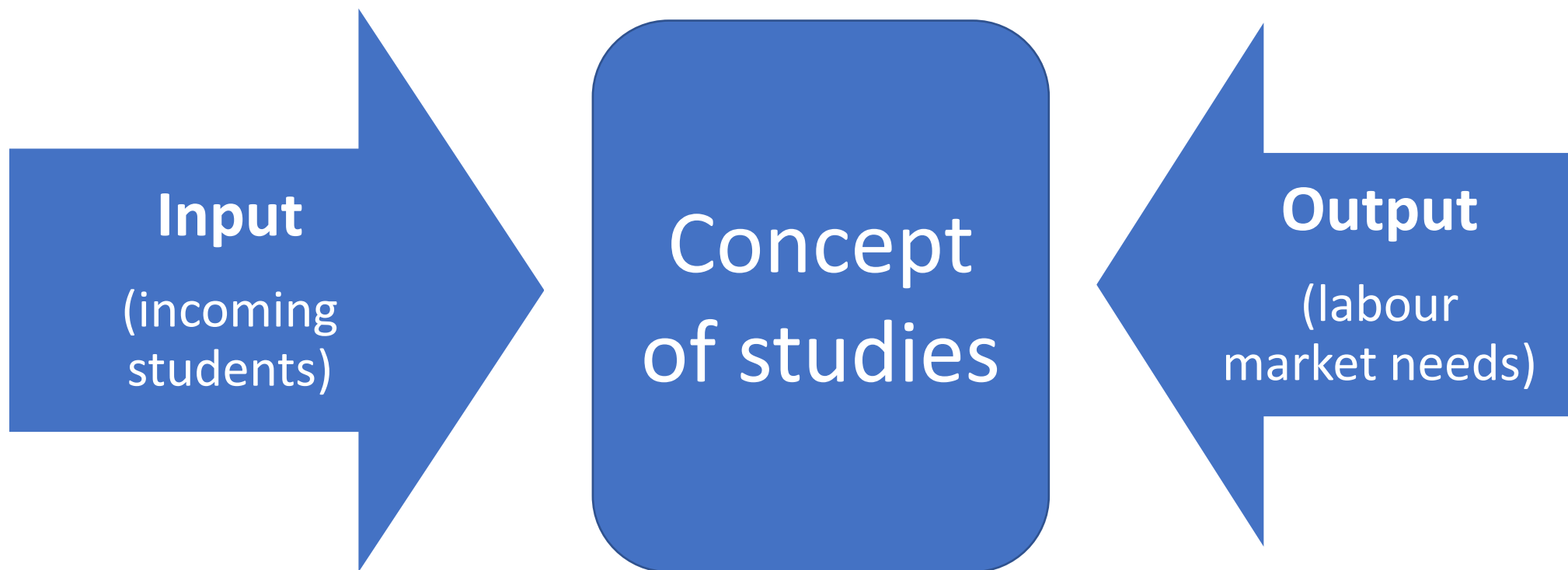




<https://www.google.com/url?sa=i&url=https%3A%2F%2Fotl.uoguelph.ca%2Fcourse-curricular-design%2Fcourse-design&psig=AOvVaw1KdlfvNDRZ62eP9gsnugbr&ust=1618917853724000&source=images&cd=vfe&ved=0CAIQjRqFwoTCJD9spCZivACFQAAAAAdAAAAABAD>

https://lh3.googleusercontent.com/proxy/ZKm4zoLunXiBKZ96n4ruivu4197r7NKS4F68IZuovT05boe3X3xN5_yVBKOKtLz4r8kUJE9IA1SY7Ia5MHPB-nxM2qkXb63X4Du3AewTyObzO0BPEA



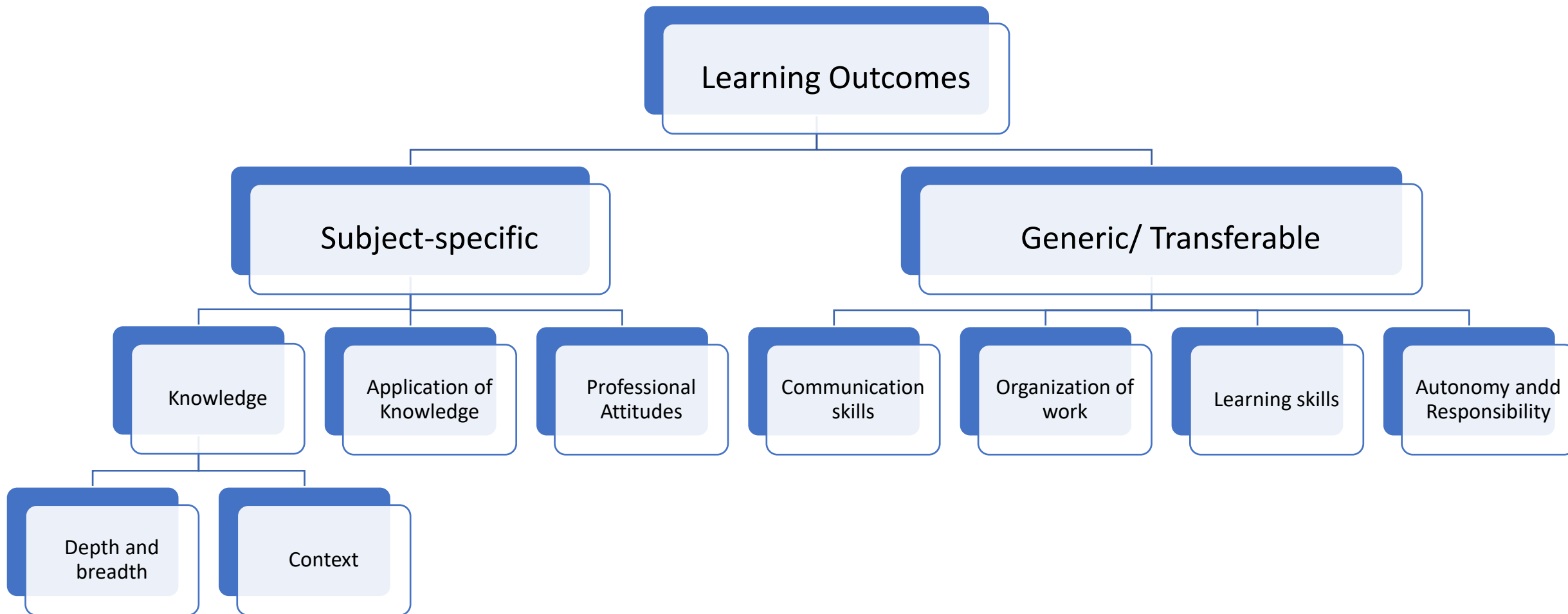


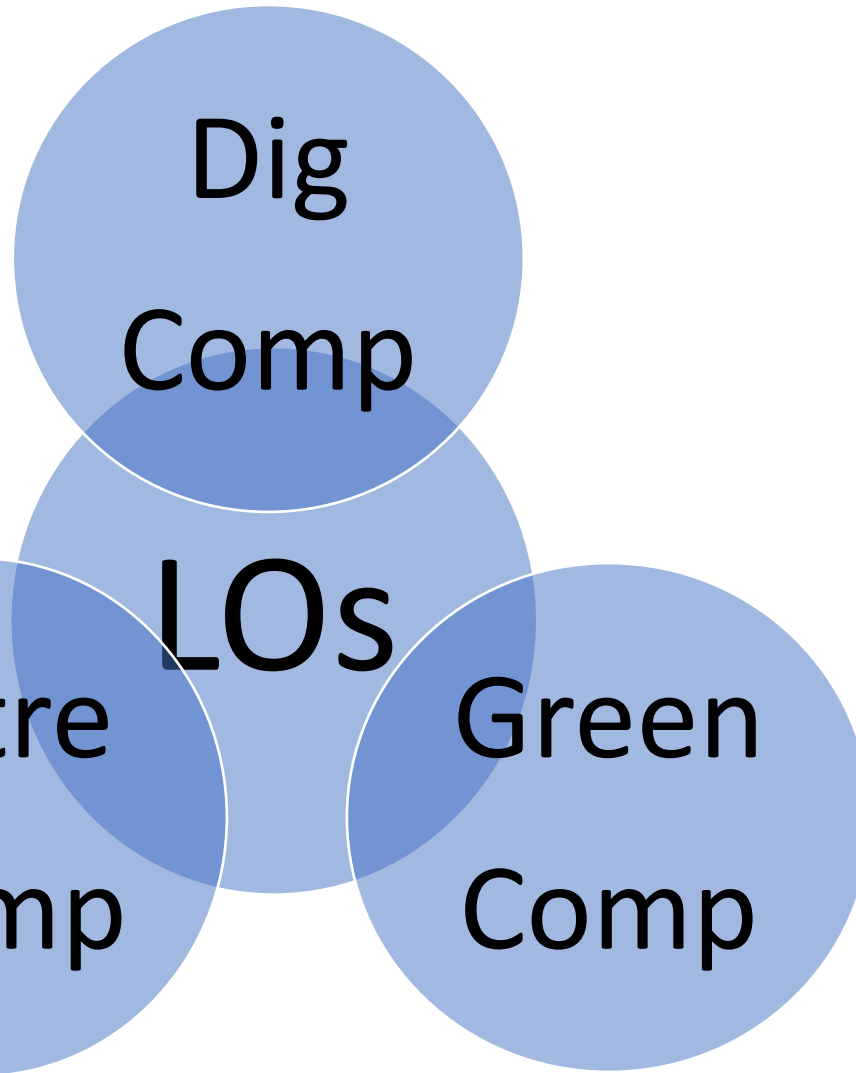
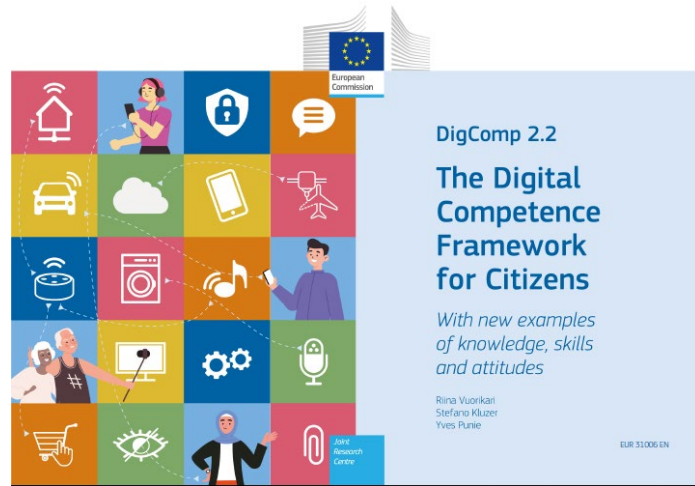


Key points:

- ❖ **Uniform description** (logical/grammatical). For example:
 - ❖ Student is able to
 - ❖ Student understands/can apply/...
- ❖ **Precision** (to make LOs measurable/possible to check)
- ❖ **Advanced level** (to use keywords like ‘advanced’, ‘recent’, ‘modern’, ‘explain’, ‘critically evaluate/critisize’, ‘argue’, ‘choose’, ‘justify’ ... etc. – to show that doctoral students are independent learners with deep and broad subject knowledge)

Action Word (performance)	Learning Statement (the “what”)	Criterion (which governs the “what” of performance)
Apply	water sterilization techniques	to purify the drinking water.
Differentiate	between clients needing short and long-term counselling	to determine a treatment plan.
Produce	MS Excel spreadsheet reports	for both profit and non-profit accounting situations.
Evaluate and synthesize	research materials	to identify relevant areas for specific research focus
Apply	an understanding of the characteristics of quantitative and qualitative research methodologies	in research design and practice
Identify	the overall process of designing a research study	from its inception to its reporting stage.
Demonstrate	a better understanding of the communication process by identifying, explaining, and applying current communication theories	as they relate to a variety of contexts (e.g. interpersonal, intercultural, group, public and professional communication)







- ❖ Doctoral School of Exact and Natural Sciences Seminar
- ❖ Fundamentals of intellectual property, commercialization and academic entrepreneurship
- ❖ Methodology of science
- ❖ Philosophy of science
- ❖ Advanced Statistics II: A practical guide to data analysis and statistical inference in science
- ❖ Scientific Computing with Python
- ❖ Information management in the Digital World
- ❖ Voice emission & Practical rhetorics
- ❖ Polish for foreigners



- ❖ Meeting in Ljubljana – main outcomes
 - ❖ Harmonization of courses description
 - ❖ Training on formulation of learning outcomes, presentation of teaching, learning and assessment etc.
 - ❖ Comments by EU partners on the content of course modules
- ❖ Suggestions for next steps
 - ❖ Peer review of syllabi (introduction of comments). Deadline: ...
 - ❖ Preparation of corrected versions of syllabi. Deadline: ...
 - ❖ Review and approval of the final version of syllabi. Deadline: ...
 - ❖ **Have a look at DigComp, EntreComp and GreenComp (maybe include some elements in course modules)**

Thanks!

Marek Frankowicz

marek.frankowicz@gmail.com



CBHE PROJECT: 617695-EPP-1-2020-1-ES-EPPKA2-CBHE-JP

“Developing Interdisciplinary Postgraduate Programmes and Strengthening Research Networks in Geoinformation Technologies in Armenia and Kyrgyzstan”

Co-funded by the
Erasmus+ Programme
of the European Union

